

RAYNER	Walter Jesse
---------------	--------------

<i>Date of Birth</i>	10.4.1882	<i>Place of Birth</i>	Wanstead		
<i>Date of Death</i>	2.10.1958	<i>Place of Death</i>	Chorleywood		
<i>Height</i>	5ft 10½in	<i>Weight</i>	12st 4lb	<i>Position</i>	Left Back

<i>Club</i>	<i>Joined</i>	<i>Season</i>	S L		U L		S F		L C		TOTALS	
			A	G	A	G	A	G	A	G	A	G
Leytonstone	1900											
South Weald												
Leytonstone	5.1905											
South Weald	1906											
Norwich City	30.8.1907	1907-08	1	0							1	0
		1908-09	11	0	4	0					15	0
Luton Town	2.1909	1909-10	2	0							2	0
Peterborough City	10.1910											
Croydon Common	18.8.1912	1912-13	3	0			2	0			5	0
		1913-14					4	0			4	0
Arsenal	1916	1917-18							10	4	10	4
Tottenham Hotspur	WW1											
		TOTALS	17	0	4	0	6	0	10	4	37	4

<i>Internationals</i>	None	<i>F.A. Cup Finals</i>	None
-----------------------	------	------------------------	------

<i>Cigarette/Trade Cards</i>				
<i>Company</i>	<i>Year</i>	<i>Number</i>	<i>Series</i>	<i>Club</i>
Taddy	1907	N/A	Prominent Footballers	Norwich City

Jottings

Was also recorded as 5ft 11½in and sometimes referred to as Raynor

The 1901 Census records him as a builder's carpenter living at 117 Leyton High Road, Leyton with his father Charles (45), a house decorator, his mother Jane (44) and his brothers Leonard (16), Aubrey (11) and Howard (10)

Played in goal for Norwich City Reserves (10.4.1909) when the first choice goalkeeper was unavailable and he himself had an injured leg

He was captain of Luton Town Reserves and he played there with his brother Aubrey and a player named C. Rayner who was apparently a cousin

His brother Aubrey moved from Peterborough City to Croydon Common at the same time, but he only ever played for the reserve side

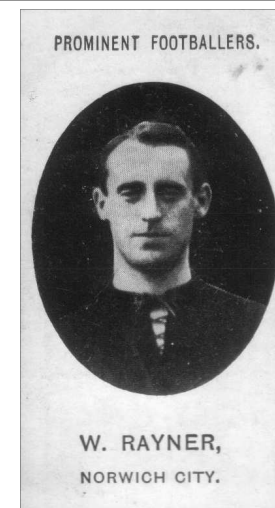
Was player coach at both Arsenal and Tottenham Hotspur, but made no first team appearances for the latter

The 1911 Census records him as a football club manager living at 56 Mayor's Walk, Peterborough with his parents, his wife Maude (25) and his daughter Evelyn (1)

Was player manager at Peterborough City (1910 to 1912), manager at Charlton Athletic (6.1920 to 13.5.1925) and Wigan Borough (5.1925 to 2.1926)

Was Charlton Athletic's first professional manager and managed the club during its first four Football League seasons

Managed Charlton Athletic during the club's F.A. Cup run in 1922-23 when, in Division 3, it knocked out three Division 1 clubs



Taddy 1907



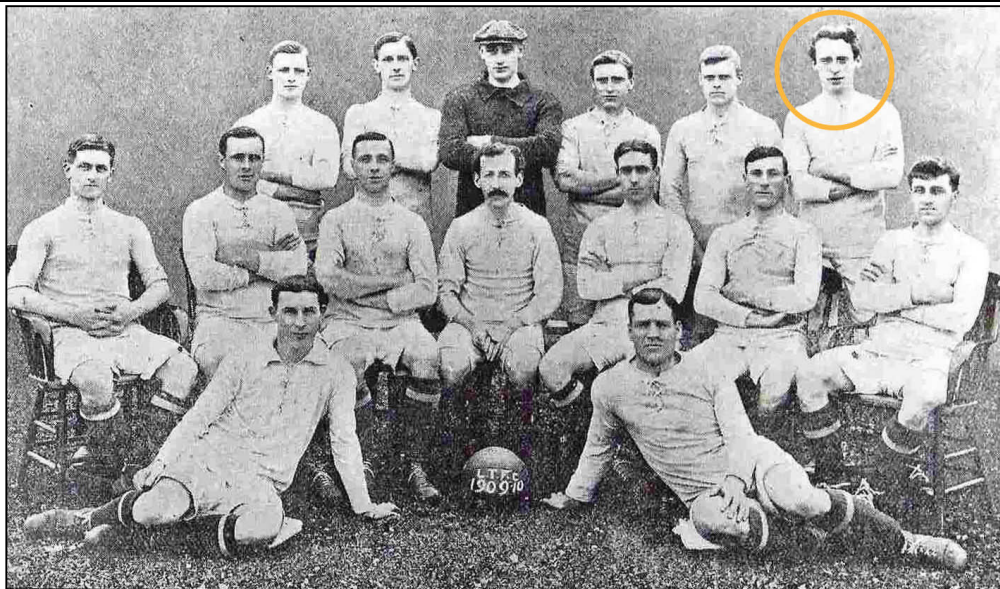
RAYNER	Walter Jesse
--------	--------------

Jottings (continued)

Was twice suspended by the F.A.; firstly when an investigation of the records at Charlton Athletic revealed financial irregularities and secondly, sine die, in October 1926 for an argument with the referee and opposition players whilst at Wigan Borough

Ran a hardware store in Whitehorse Road, Croydon

Died whilst living at 2 Dog Kennel Cottages, The Common, Chorleywood - his death certificate records him as a master builder



Luton Town 1909-10



Charlton Athletic 1920-21



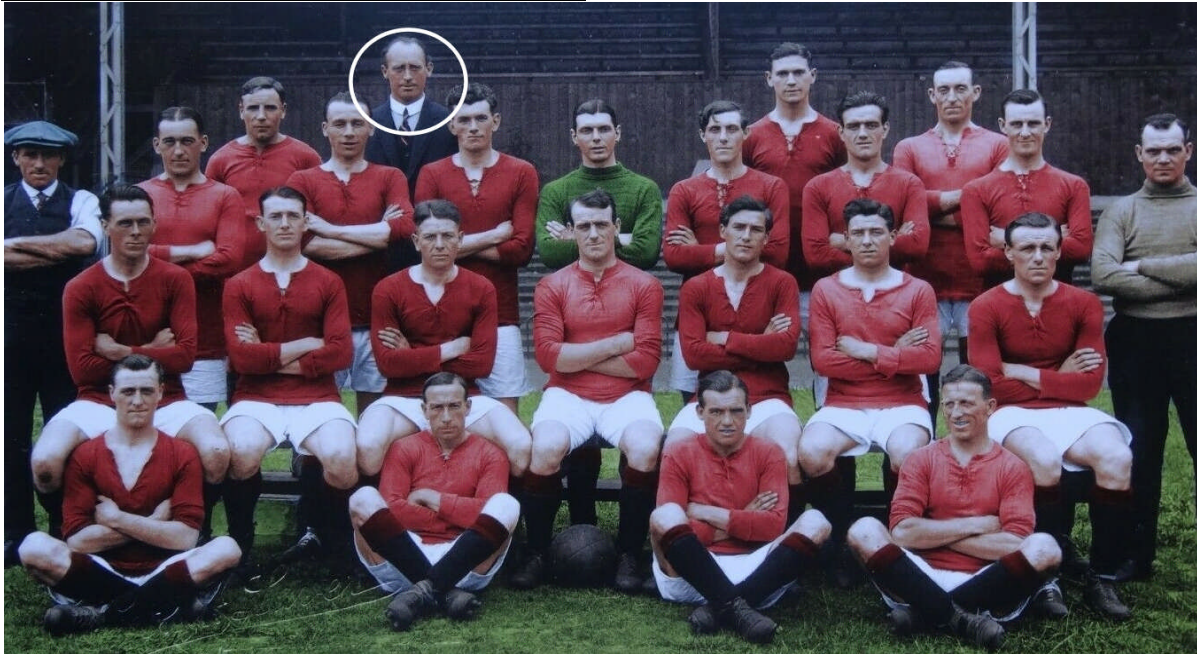
Charlton Athletic 1920-21



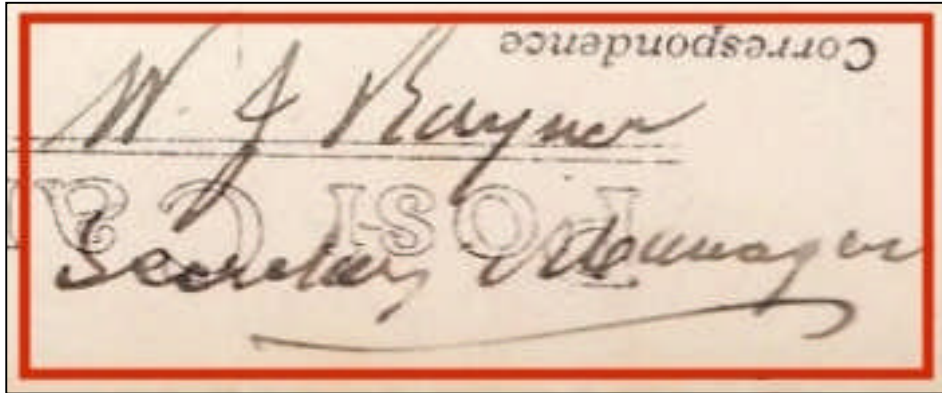
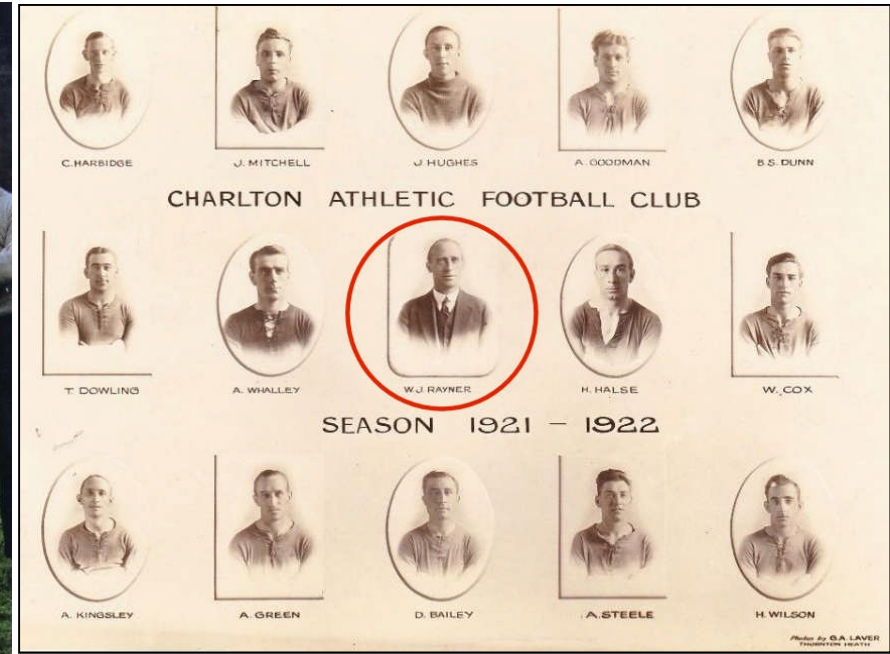
Charlton Athletic 1921-22

RAYNER

Walter Jesse



Charlton Athletic 1922-23



His signature at Charlton Athletic 1922



Charlton Athletic 1922-23

RAYNER

Walter Jesse



Peterborough City 1912-13