

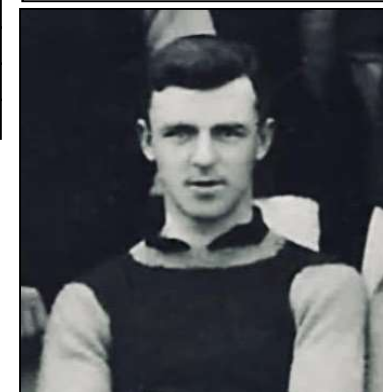
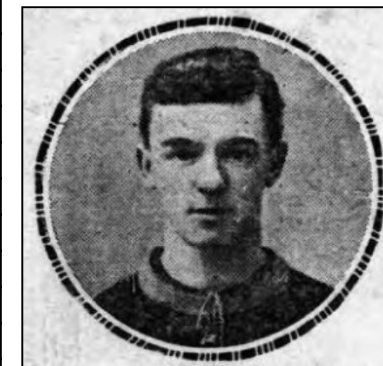
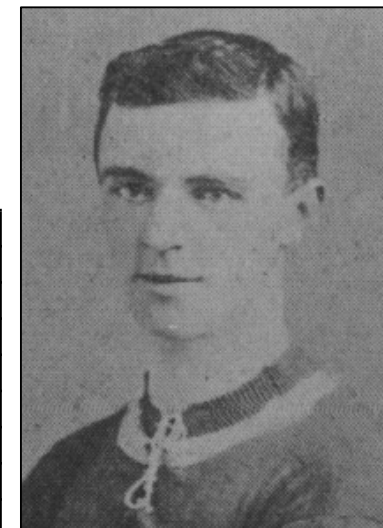
SPOTTISWOOD	Robert
--------------------	--------

<i>Date of Birth</i>	20.1.1884	<i>Place of Birth</i>	Carlisle		
<i>Date of Death</i>	Q1 1966	<i>Place of Death</i>	Bromley		
<i>Height</i>	5ft 9in	<i>Weight</i>	11st 8lb	<i>Position</i>	Half Back

<i>Club</i>	<i>Joined</i>	<i>Season</i>	<i>F L</i>		<i>F A</i>		<i>S L</i>		<i>S E</i>		<i>W L</i>		<i>U L</i>		<i>L C</i>		<i>TOTALS</i>	
			<i>A</i>	<i>G</i>	<i>A</i>	<i>G</i>	<i>A</i>	<i>G</i>	<i>A</i>	<i>G</i>	<i>A</i>	<i>G</i>	<i>A</i>	<i>G</i>	<i>A</i>	<i>G</i>	<i>A</i>	<i>G</i>
Cath. Young Mens Soc.																		
Carlisle Butchers F.C.																		
Carlisle United	9.1906																	
Croydon Common	14.5.1908	1908-09			10	1	11	0	22	1	9	0	6	0			58	2
Crystal Palace	5.1909	1909-10			1	0	40	1									41	1
		1910-11					10	1									10	1
		1911-12			4	0	28	0									32	0
		1912-13			3	0	31	0									34	0
		1913-14			1	0	32	0									33	0
		1914-15			2	0	36	0									38	0
		1915-16													4	0	4	0
		1916-17													2	0	2	0
		1917-18													1	0	1	0
Clapton Orient	10.1919	1919-20	1	0													1	0
Caerphilly Town ?																		
Treherbert ?																		
Aberdare	7.1920																	
Sittingbourne																		
Ramsgate ?																		
Elsecar Main	cs1922																	
		TOTALS	1	0	21	1	188	2	22	1	9	0	6	0			254	4

<i>Internationals</i>	None	<i>F.A. Cup Finals</i>	None
-----------------------	------	------------------------	------

<i>Cigarette/Trade Cards</i>				
<i>Company</i>	<i>Year</i>	<i>Number</i>	<i>Series</i>	<i>Club</i>
Taddy	1913	N/A	Prominent Footballers	Crystal Palace
Smith F. & J.	1917	29	Football Club Records	Crystal Palace



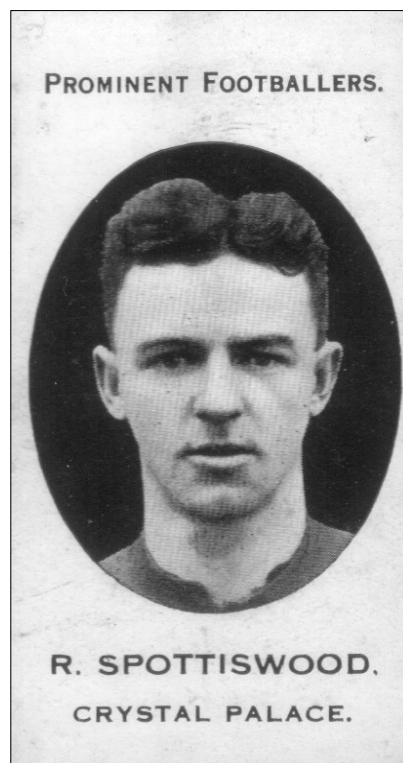
SPOTTISWOOD	Robert
--------------------	--------

<i>Jottings</i>

The press often also spell his name Spottiswoode
Appeared for Croydon Common in 1 minor cup match, without scoring
Played for the Southern League in a 2-1 defeat to the Football League on 30 September 1912 at Old Trafford
His appearances for Crystal Palace in the London Challenge Cup: 1909-10 1 app, 1910-11 2 apps, 1912-13 6 apps (played in drawn final, but missed replay when beat West Ham United), 1913-14 4 apps (beat Tottenham Hotspur in final), 1914-14 3 apps
His appearances for Crystal Palace in the London Professional Charity Cup: 1909-10 2 apps, 1913-14 1 app, 1914-15 1 app
His appearances for Crystal Palace in the Southern Charity Cup: 1909-10 1 app, 1910-11 2 apps, 1911-12 1 app, 1912-13 1 app
His appearances for Crystal Palace in the Kent Senior Shield: 1911-12 3 apps (beat New Brompton in final), 1912-13 3 apps (lost to Millwall in final), 1913-14 3 apps
Was suspended "sine die" whilst at Crystal Palace, possibly for betting and, when Bourne (Crystal Palace chairman) wrote in the Daily Mail of Spottiswood's "ruination by betting", he sued the writer, the club and the newspaper and, with the help of the Players' Union, won an out of court settlement of £50
A half-back named Spottiswood(e) appeared in several matches in the first half of the 1921-22 season for Ramsgate - could it have been him?
The 1911 Census records him as a professional footballer living at 73 Whitehorse Road, Croydon as a lodger with a family named Lees
Was coach at Inter Milan in between 1922 and 1924
He was cremated at the Elmers End Cemetery
His brother, JOSEPH DOMINIC (born 16.3.1893 in Carlisle, died 7.5.1960 in Paddington) played for Manchester City, Bury, Chelsea, Swansea and Queens Park Rangers



Smith F. & J. 1917



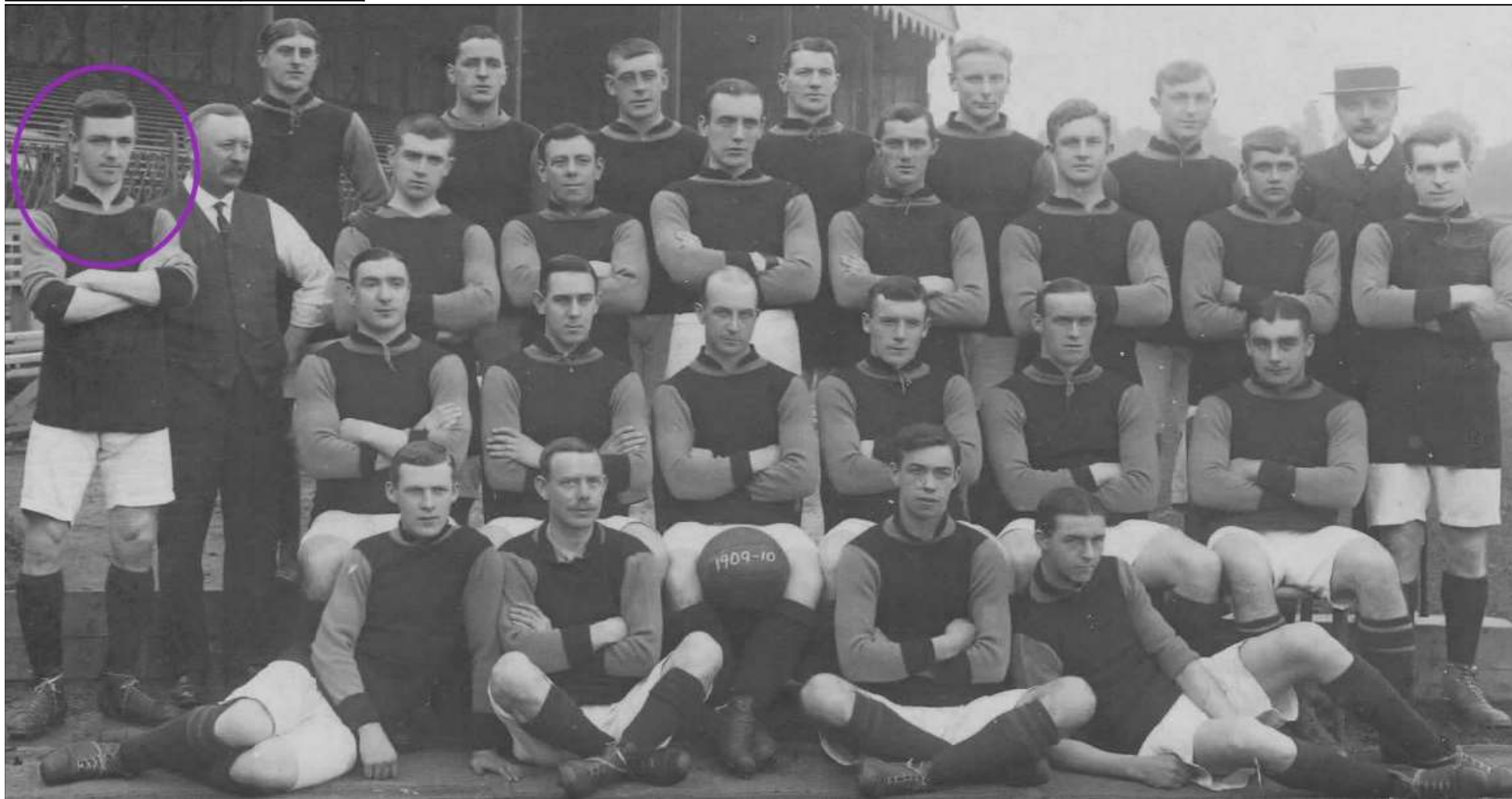
Taddy 1913



Representing the Southern League v. the Football League in 1912



Carlisle United 1907-08

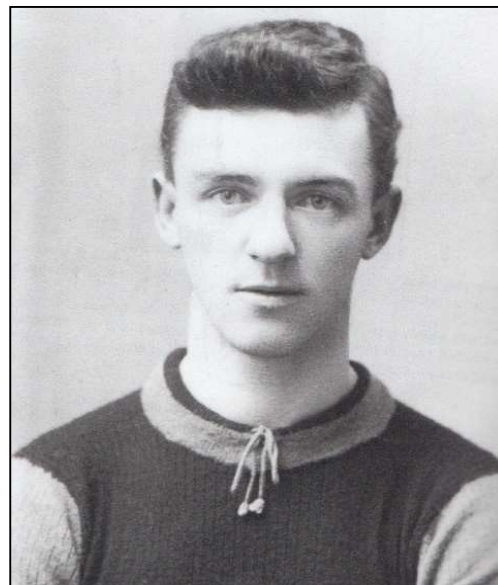


Crystal Palace 1909-10

With thanks to Ian Weller for the Crystal Palace photographs



At Inter Milan with some of the players



At Crystal Palace



At Crystal Palace



Carlisle United 1906-07



Carlisle United 1906-07

1907-8

Carlisle United Football Club

Players Autograph

James Fletcher - Goalkeeper

Edward Collins Right Full Back

Anthony Barker Left Full Back

William James. Blyth. Right-halfo - Back

Thomas W. Atter (Captain)

Robert Spottiswood Left Half Back

Herbert Powell Outside Right

David Maher. Inside Right

Robert Fair Centre Forward

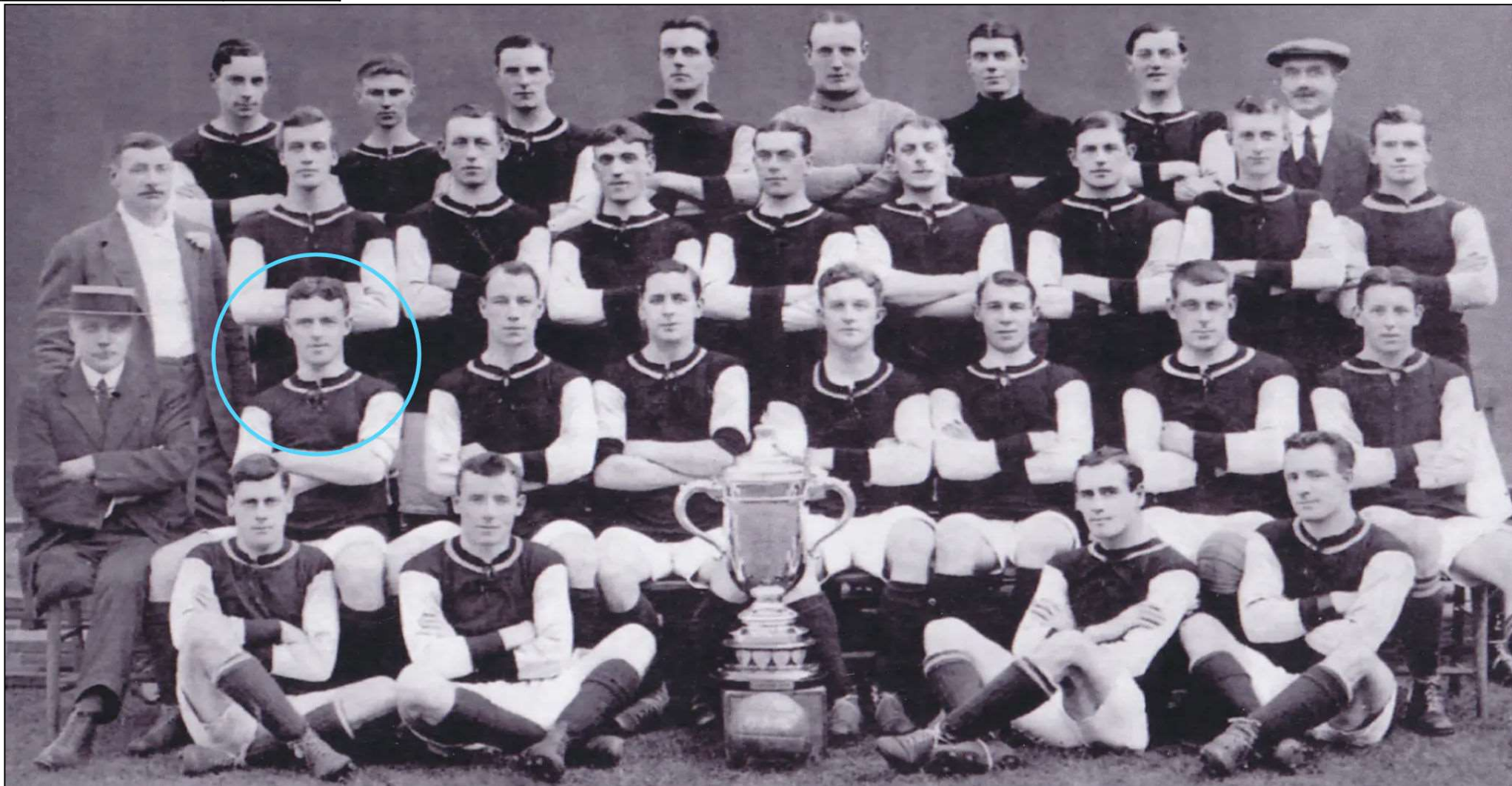
Alfred Roberson inside Left Forward.

William Bancroft outside Left Forward

Fred Paley Trainer
James Stansfield Secretary



Crystal Palace 1911-12



Crystal Palace 1913-14



Crystal Palace 1914-15